



P Series

Active Mobile Array
Sound System



P Series Active Mobile Array Sound System

With the prosperity of the cultural and entertainment industry, various small and medium-sized performances, music festivals, receptions, and other activities are increasing. These activities have very high requirements for sound system, which requires adequate SPL, good coverage and clear sound quality to meet the hearing experience of on-site audience.

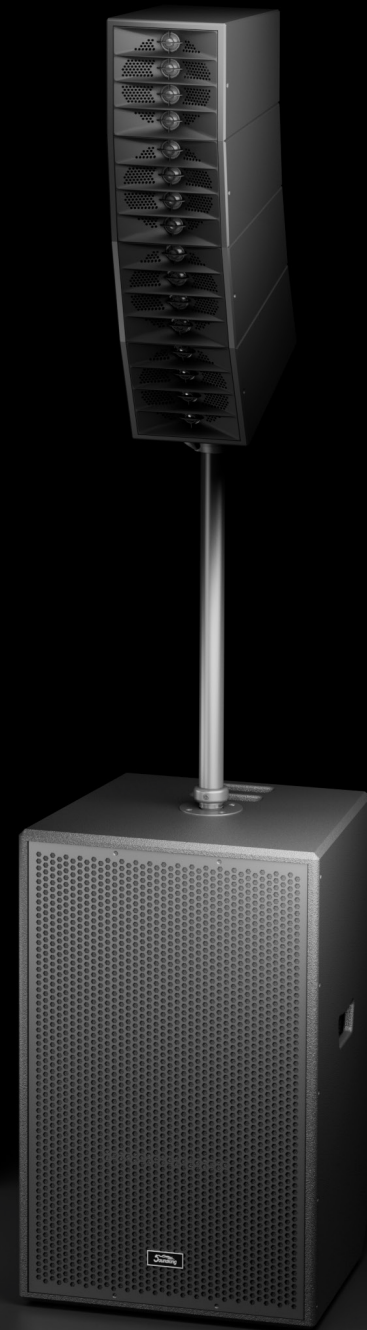
The active mobile array sound system has become an ideal choice for these large-scale events due to its high power, long projection distance, and excellent sound quality performance.

In order to meet the market demand, Soundking has continuously increased its R&D efforts and developed the P Series Active Mobile Array Sound System.

P212
Active Mobile Array
Sound System



P118
Active Mobile Array
Sound System



P Series Active Mobile Array Sound System

The system includes two audio systems: **P212** and **P118**.

The **P212** active mobile array sound system consists of one **4 x 5"** neodymium magnetic passive line array full-range loudspeaker + one embedded **4-way** input box type mixer with band power amplifier, Dual **12"** active subwoofer + **1 x 6.35** 2-core plug special adapter bracket;

The **P118** active mobile array sound system is composed of one **4 x 5"** neodymium magnetic passive line array full-range loudspeaker + one **18"** active subwoofer with built-in **4-way** input box mixer with dual channel power amplifier + **1 x 6.35** 2-core plug special adapter bracket.

Passive Array Full-range Loudspeaker:

It is composed of **4 x 5"** MLF speakers + **16 x 1"** dome horn HF; Cabinet array design, with larger vertical angle coverage; Horn HF design, with strong penetration and analytical power.

Dual 12" Active Subwoofer

18" Active Subwoofer:

Phase-inverted design, built-in **2-way 800W + 800W** dual channel power amplifier, **4-way** input channel box mixer, including **2-way** Mic/Line input, **1-way** RCA stereo hybrid line input, **1-way** HI-Z line input, **2-way** XLR line output, **1-way** hybrid line output, ultra-low frequency volume can be independently communication and intelligence system; The overall timbre is clear and exquisite, the LF effect is surging, with strong penetration and shock, and the sound field has a wide coverage distance.



· Dual 12" Active Subwoofer



· 18" Active Subwoofer

4 x 5" MLF Speaker



16 x 1" Dome Horn HF

Features

- **Built in Powerful 24bit DSP Loudspeaker Processing Module**

It has the functions of gain, crossover, equalization, delay, threshold, program memory, etc. You can directly select the default program design of the manufacturer, or you can optimize the settings yourself.

- **2-way 800W+800W "CLASS-D" Amplifier**

High efficiency, high power, low distortion, excellent sound quality, and stable performance.

- **Wide Power Supply Design**

Lightweight and stable in performance, AC100V-240V power input is convenient for use in different countries.

- **Support Connection of TWS Bluetooth Signal**

When using a pair of P212 / P118 Bluetooth speakers, they can be set to TWS mode to create a stereo effect.

- **Ultra Long Delay Time DSP Setting**

Adjustment range 0-100 meters, Step by 0.25 meters.

- **Horn HF Design Ultra Wide Angle Coverage**

Wide coverage angle, H x V: 100° x 60°, farther sound reinforcement, strong penetration and analytical power, can effectively avoid the defect of too small vertical coverage plane angle of vertical linear sound source.

- **The Design of Adding Casters to the Subwoofer Cabinet**

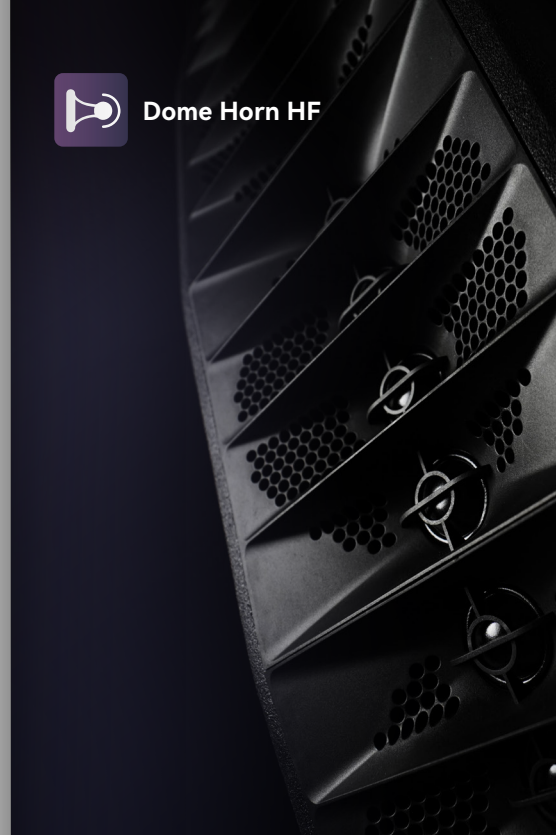
Time saving, labor-saving, and more convenient and efficient for mobile use.

- **Pneumatic Lifting Bracket**

The height of the array full-range loudspeaker can be adjustment according to the use requirements to obtain excellent sound field coverage. The array full-range loudspeaker does not need an external loudspeaker cable connection. The internal socket of the loudspeaker has been wired, and the cabinet can be plugged in for normal use. The contact is reliable and easy to operate.



Dome Horn HF



Caster Design



Compact Mixing Console



2



Pneumatic Lifting Bracket

Function and Control



- 1 GAIN**
Gain knob, respectively control 1# - 4# input signal size.
- 2 LINE/MIC Selector Switch**
Signal source selection switch, offering gain settings for line input and mic input modes
- 3 6.35mm JACK**
3# signal input socket, connection to instrument similar to wooden guitar with high input impedance.
- 4 DSP CONTROL**
DSP setting function knob, menu can be set by pressing and rotating.
- 5 LINE INPUT**
RCA line signal input socket.
- 6 SUB LEVEL**
Ultra low volume knob.
- 7 MIX OUTPUT**
Signal mixing output socket.
- 8 LINE LINK**
Signal link output sockets, connect 1# - 2# signal input sockets respectively.
- 9 INPUT SOCKET**
Signal input socket, COMBO socket, compatible with XLR and 6.35mm JACK plug.

Parameters



P212 Active Mobile Array Sound System

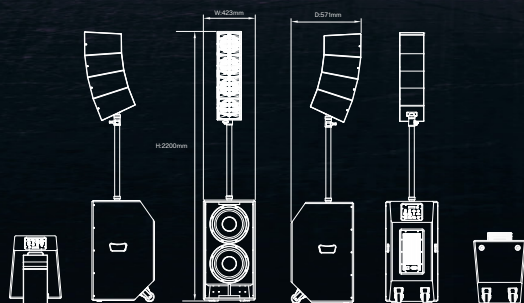
System Frequency Response	35Hz-20kHz (-10dB)
System Max SPL (peak)	130dB
System Coverage (H x V)	100° x 60° (-10dB)
System Volume (W x H x D)	423 x 2200 x 571 (mm)

Passive Array Full-range Loudspeaker

MF	4 x 5" Nd magnet LF Speaker
HF	16 x 1" Dome Horn HF
Volume (W x H x D)	198 x 736 x 339 (mm)
Net Weight	12.1kg

Dual 12" Active Subwoofer

Speaker	2 x 12" LF Speakers
Amplifier Power	2 x 800W (RMS)
Input Sensitivity	0dBu
Power Supply	AC100V-240V
Volume (W x H x D)	423 x 823 x 510 (mm)
Net Weight	42kg



P118 Active Mobile Array Sound System

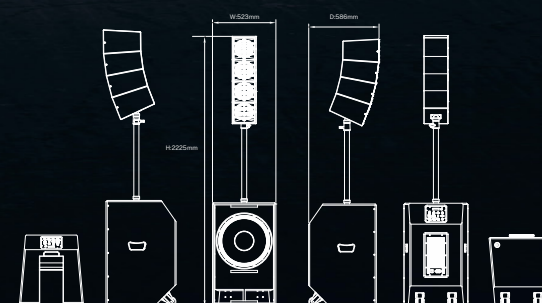
System Frequency Response	30Hz-20kHz (-10dB)
System Max SPL (peak)	132dB
System Coverage (H x V)	100° x 60° (-10dB)
System Volume (W x H x D)	523 x 2225 x 586 (mm)

Passive Array Full-range Loudspeaker

MF	4 x 5" Nd magnet LF Speaker
HF	16 x 1" Dome Horn HF
Volume (W x H x D)	198 x 736 x 339 (mm)
Net Weight	12.1kg

18" Active Subwoofer

Speaker	18" LF Speakers
Amplifier Power	2 x 800W (RMS)
Input Sensitivity	0dBu
Power Supply	AC100V-240V
Volume (W x H x D)	523 x 852 x 564 (mm)
Net Weight	44.5kg



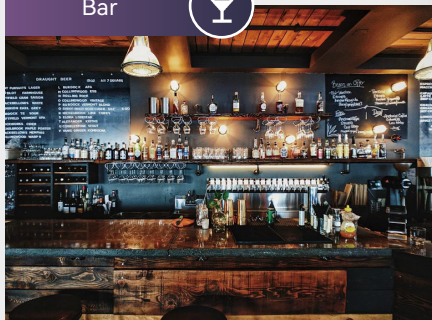
Application

Suitable for 1000-1500m² space

Middle/Small Types
Mobile Show



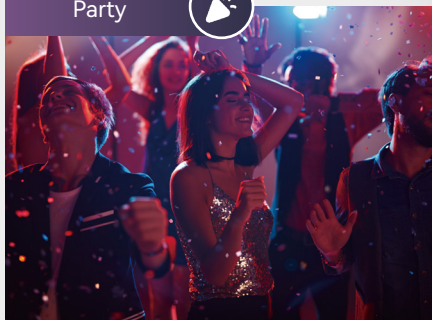
Bar



Salon



Party



Wedding



Speech



Loudspeaker Bracket

SB310AP

Pneumatic Lifting Bracket



Bracket Height
Adjustment Valve

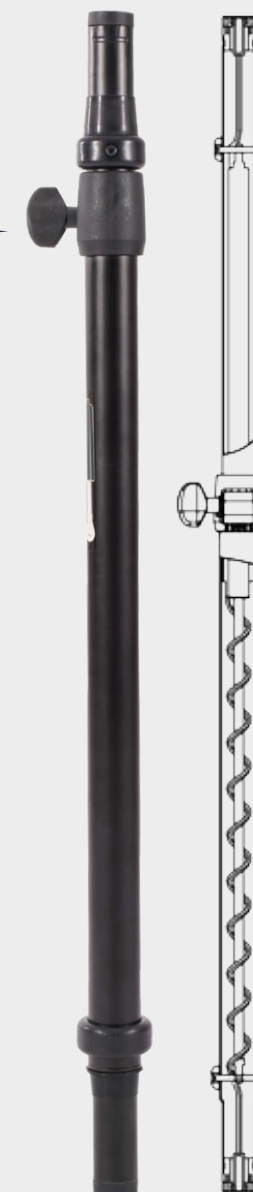


Introduction

Built in telescopic gas spring (stroke: S=450mm, pressure: F=130N); The diameter of connection round hole is 35mm. The product has its own signal line. Both ends of the pipeline are equipped with 6.35mm female seats, which are respectively connection to the upper and lower loudspeakers. The contact is reliable. Easy to operate, the height of the full-range loudspeaker of the line array can be adjustment according to the use requirements to obtain the ideal sound coverage.

Parameters

Height	890 - 1230 (mm)
Load	50kg
Weight	1.8kg
Texture of Material	Aluminum Alloy
Packaging Inner Box	110 x 75 x 920 (mm)



Internal Structure

Accessory

Full-range Loudspeaker Protective Bag



Subwoofer Transport Bag



Power Bank PB Series



Size		PB-1000F	PB-1500F	PB-2000F
Fast charging (Fully charged)		1.5 hours	1.8 hours	1.8 hours
Output parameters	AC output	120V / 50Hz or 230V / 60Hz (customizable to different countries' voltage and socket specifications)		
	Rated output power	1000W	1500W	2000W
	DCx2	12V / 5A 60W max	12V / 10A 120W max	12V / 10A 120W max
	USB-QC3.0x2	5V / 3A, 9V / 2A, 12V / 1.5A 18W MAX		
	TYPE-Cx2	PD100W / PD30W	PD100W / PD60W	PD100W / PD60W
	Car charger outlet	12V / 10A 120W MAX		
	Wireless charging	15W		
	LED lamp	4W (red and white)		
	Operation temperature	-10 ~ 40°C		
	Service life	>2000 times		
Netweight / Gross weight		12kg / 14.9kg	17kg / 21kg	20kg / 24kg
Product size		326x236x285mm	321x235x310mm	321x235x344mm

Electronic Catalog APP
of Soundking

IT'S
OFFICIALLY
ONLINE



IOS



ANDROID

Scan code download