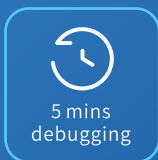




Wireless Microphone & Speaker Combo Series

ARTOS-ART series
STRATOS-SRT series



ART series

STR series

R & D Background

Due to its light weight, multi-function and convenient installation, professional combination speaker system has been in considerable demand in the international and domestic markets. The general professional combination speaker system includes: sound source, mixer, peripheral equipment, amplifier, speaker and other kinds of equipment. Different signal lines, speaker cables and system debugging need to be connected between different types of equipment. It requires professional audio engineers to spend considerable time to install and debug, which is very troublesome. For these shortcomings, based on many years of technical experience, Soundking has developed ARTOS/STRATOS speaker system. Compared with ordinary composite speakers, it not only has the advantages of light weight, small size, convenient carrying, but also has the features of high sound quality, wide horizontal coverage angle, high SPL, and long radiation distance. Among them, the wireless microphone combination speaker system series integrates the wireless microphone, mixer, peripheral equipment, amplifier, speaker and other devices into one, greatly simplifies the connection and debugging of the speaker system, greatly reduces the difficulty of tuning, frees the work of professional tuners, and allows the performers to adjust in real time according to the needs of the scene. Ideal for salons, wine parties, band shows, open air dances, conference room amplification and other applications.

Product lineup

ARTOS wireless microphone and speaker combo series



ART 1000M
ART 1200M



ART 1000 (Amplifier)
ART 1200 (Amplifier)



ART 1000 Twin
ART 1200 Twin

Product lineup

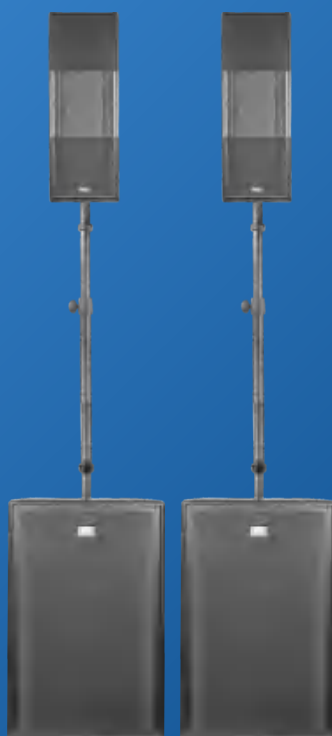
STRATOS wireless microphone and speaker combo series



SRT 5000M
SRT 8000M



SRT 5000 (Amplifier)
SRT 8000 (Amplifier)



SRT 5000 Twin
SRT 8000 Twin

Application

Suitable for salons, bars, piano bars, small band performances, meetings, speeches, small malls, school playgrounds, small business activities and other applications.



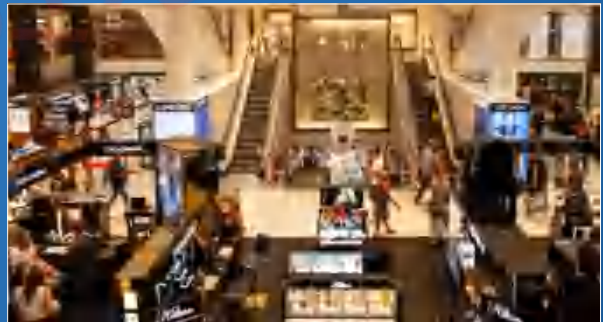
Salon



Bars/ Piano bar



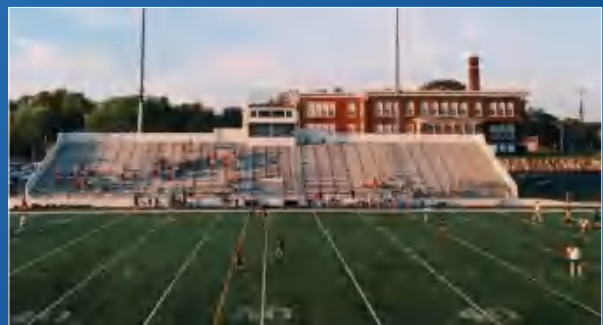
Small-sized band performance



Shopping Mall / Commercial Small Event



Speech/Conference



School playground

Technological innovation

ART series

- ◆ Wide range, frequency response 38Hz-20kHz, full band music performance, good clarity, full vocals, dynamic and powerful.
- ◆ Integrate wireless microphone, mixer, peripheral equipment, amplifier, speaker and other devices into one. It simplifies the connection and debugging of the speaker system.
- ◆ 6-way input digital mixer with dual channel amplifier, powerful and easy to operate. Making the vocal more original.
- ◆ Two MIC/LINE inputs with reverberation (REVERB), volume adjustment and DSP adjustment are powerful and easy to operate.
- ◆ Wireless signal transmission function, more convenient to use, with a transmission distance of 30 meters in open space.
- ◆ Supports Bluetooth connection, and the main and sub speaker combo make the stereo sound richer and more realistic.
- ◆ There are three application modes: music, vocal and DJ, which can be conveniently and flexibly used in various occasions.
- ◆ The plastic column support cabinet can adjust the height of the column speaker system according to the use requirements to obtain the best sound coverage. (The height adjustment column can be removed when the audience is sitting and listening.)
- ◆ Adjustable ultra-long delay time DSP settings (0.25m steps), when used in cascade of multiple audio systems and when backfield complementary sound systems need to increase the delay, synchronize with the main amplifier column system in phase.
- ◆ Plug and play, there is no additional connection between the column speaker and the subwoofer, the internal socket of the speaker is already connected. Precise 4-pin connection ensures that the speaker is assembled accurately without loosening and can be used normally.
- ◆ The combo system comes with a bag to make the collection easier.



Technological innovation

ART series

6x3" Full-range transducer

- ◆ 6x3 inch neodymium magnetic full-range transducer, high sensitivity, good intermediate frequency characteristics, light weight;
- ◆ Wide range, frequency response 38Hz-20kHz, with full band music performance;
- ◆ 120°x30° ultra-wide sound coverage range (H x V), can effectively avoid the vertical coverage angle of the vertical linear sound source is too small defect.
- ◆ Its clarity is high; The radiation is far enough that listeners can hear the same sound from different angles;
- ◆ ABS engineering plastic cabinet, light weight.

1x1" Compressed driver horn speaker

- ◆ 1" compression driver horn with NdFeB magnet, high sensitivity;
- ◆ It features wide frequency response, high definition, wide coverage, long radiation distance;
- ◆ There is no need for external speaker cable connection. The internal socket of the speaker is already connected, so the speaker can be used normally with simple and easy operation.



Technological innovation

ART series

Subwoofer



Rear panel

Subwoofer

- ◆ It is equipped with a 10" (ART1000M) / 12" (ART1200M) subwoofer, a ferrite magnetic circuit, and a rubber surround paper cone woofer with high compliance;
- ◆ 2" (50mm) long-stroke voice coil, with high power, good bass elasticity, allows the audience to fully feel your bass;
- ◆ Beautiful curved birch plywood cabinet, not only high strength but also light weight, is the best choice for outdoor performance;
- ◆ Foldable ported tube design, compact appearance, good bass extension;
- ◆ Multi-input mixer with dual-channel amplifier, 2-in-4-out DSP module, powerful and easy to use;
- ◆ External wireless MIC receiving antenna can effectively extend the receiving distance of wireless MIC and obtain better hearing effect.

With multi-channel analog mixer

- ◆ 2-channel analog mixer (built-in 2-ch wireless microphone);
- ◆ 2x MIC/LINE input (adjustable), 1x RCA stereo input, 1x HI-Z instrument input;
- ◆ Class D amplifier module 2x300W (RMS);
- ◆ Low distortion, perfect sound, energetic and powerful switching power supply;
- ◆ Powerful 24-bit DSP with display, ONE CONTROL encoder, can store preset;
- ◆ Functions such as digital gain control, high-pass filter, delay, two-channel limiter and equalizer;
- ◆ The digital delay in the delay area can be up to 100 meters (0.25 meters per level).



Multi-channel analog mixer panel

Technological innovation

Wireless transmission signal function, 30 meters in open space, more convenient to use.



30m



Technological innovation

ART series multi-channel analog mixing functions

Wireless microphone antenna

Wireless MIC receiving antenna can effectively extend the receiving distance of wireless MIC and obtain better hearing effect.

LINE/MIC switch

The signal source selection switches are line input and microphone input state gain selection.

6.35mm JACK

High impedance signal input socket to connect high input impedance sound source like acoustic guitar.

DSP CONTROL

DSP set function knob, you can set menu by pressing and rotating.

VOLUME

Volume knob, respectively control channel A/B input signal.

INPUT socket

Signal input socket, COMBO socket, compatible with XLR and 6.35mm Jack plug.

LINE INPUT

RCA line signal input.

SUB LEVEL

Subwoofer volume knob.

OUTPUT

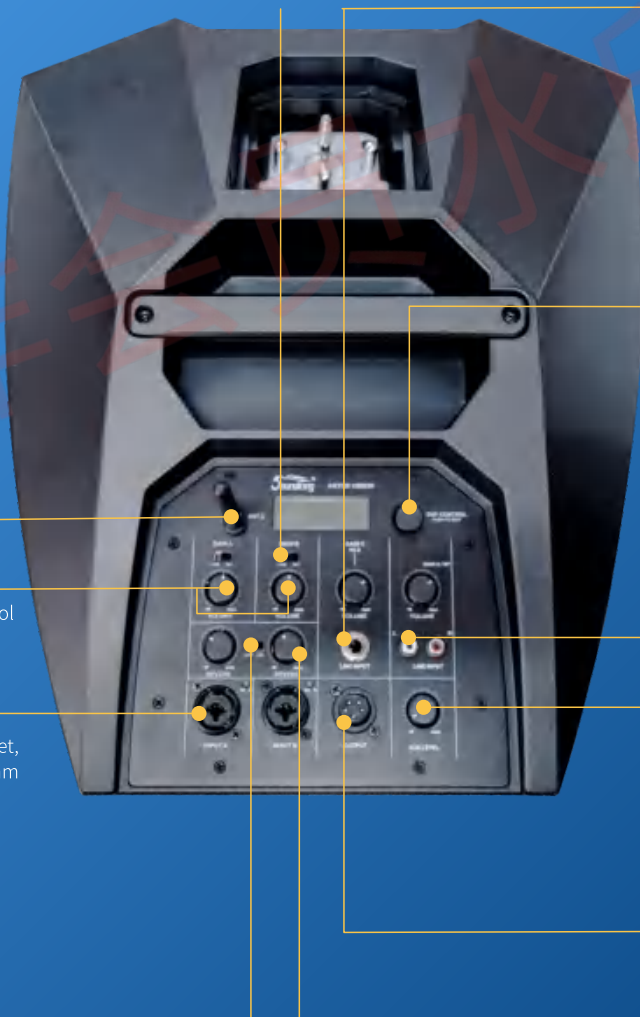
Sub-speaker signal output.

REVERB ON/OFF

Reverb effect switch, ON: effect turn on, OFF: effect turn off.

REVERB

Reverb effect depth adjustment knob.



Wireless microphone series (ART series)

ART1000M/ ART1200M

Introduction:

Wireless microphone combo speaker is a multifunctional portable column audio system. Consist of 2 wireless microphones+ 6x3" passive plastic column speaker+ 1 10-inch/12-inch active subwoofer with 6-ch input mixer with 2-ch amplifier+ 1 plastic support column. Simply assemble to form a set of high performance professional speaker system with wireless microphone. Its 3-way 3" plastic combo speaker system includes a full-range speaker consisting of a 6x3" full-range speaker + a 1x1" compressed driver horn speaker and a 10" /12" active subwoofer. The system features excellent sound quality, light weight, convenient carrying, constant directional treble horn design, and even sound field coverage. 10" /12" active subwoofer, ported design, built-in 2x300W dual-channel amplifier, 6-ch input mixer, including 2 MIC/Line inputs, 1 RCA stereo hybrid line input, 1 HI-Z line input, 2 microphone output, 1 sub speaker signal output and ultra-low frequency volume control.

Innovation:

- ◆ Active 3-way system for high-definition sound (maximum 122dB);
- ◆ 6x3" and 1x1" precision transducers;
- ◆ Extra wide sound coverage 120°x30°(horizontal x vertical);
- ◆ 10" /12" subwoofer provides deep and powerful bass;
- ◆ Class D amplifier module, low distortion, perfect sound, powerful SMPS;
- ◆ Multi - channel mixer:
 - 1.2xMIC/LINE input (adjustable), 1xRCA stereo input, 1xHI-Z instrument input,
 - 2.Powerful 24-bit DSP with display and ONE CONTROL encoder to store presets;
 - Digital gain control, high-pass filter, delay, dual-channel limiter and equalization.

Feature:

- ◆ Built-in powerful 24bit DSP speaker processing module, with gain, divider, EQ, delay, limit, program memory and other functions, you can directly select the default program design of the manufacturer, or you can optimize the settings yourself;
- ◆ High efficiency 2-way 300W "CLASS-D" amplifier with high power, low distortion and excellent sound quality;
- ◆ Switch power design, light weight, stable performance;
- ◆ Support Bluetooth signal connection;
- ◆ Built-in wireless transmission signal function, 30 meters in open space, more convenient to use;
- ◆ Plastic speaker support cabinet can adjust the height of the speaker system to get the best sound coverage.



ART1000M / ART1200M

Specification

Model	ART 1000M	ART 1200M
Frequency response(-10dB)	38Hz~18kHz	40Hz~18kHz
LF transducer	1x10" /φ50mm VC /250W /4Ω	1x12" /φ63mm VC /300W /4Ω
MF transducer	6x3" /φ20mm VC /30W /8Ω	
HF transducer	1x1" /φ25mm VC /10W /8Ω	
Amplifier power	2x300W	
Max. SPL@1m	122dBpeak	
Coverage(HxV)	120°x30°	
35mm mounting hole	NO	
DSP connection	24bit(2 in 4 out)	
Input sensitivity	0dB	
Connection	2xCOMBO multifunction socket, 1x6.35mm JACK, 1 pair of RCA stereo hybrid line input	
Wireless microphone	Frequency range:470~960MHz Frequency stability: <+/-15ppm Delay: <3ms Frequency response:50~15khz Receive sensitivity: <-105dBm Receive distance:30m(outdoor direct distance)	
Dimension(WxHxD)	366x206x541mm	366x211x541mm
Net weight	27.3 kg	28.8 kg
Package size	335x215x945mm(column) 685x515x730mm(subwoofer)	335x215x945(column) 685x515x775(subwoofer)
Gross weight	7.5kg(column) 27.8kg(subwoofer)	7.5kg(column) 29.3kg(subwoofer)
Packing quantity	1pcs(column) 1pcs(subwoofer)	

Dual-channel UHF handheld microphone

- ◆ Using traditional FM modulation technology, it has excellent RF and audio performance. The transmission delay is small, the transmission distance is long, and the product performance is stable.
- ◆ Receiving module selects frequency points through wireless overhead coding, 100 adjustable frequency points;
- ◆ Handheld can save battery power by automatically turning off the handheld by detecting external sound and keeping it in a quiet and silent environment for more than 10 minutes.
- ◆ Specification
 Power : <10mW
 Operation current: <150mA
 Power supply: 1.5V x2 (2 AA batteries)
 Frequency range: 470~960MHz
 Transmission frequency stability: <+/-15ppm



Wireless microphone series (ART series)

ART1000 (Amplifier) / ART1200 (Amplifier)

Feature:

- ◆ Class D amplifier module 300W(RMS)
- ◆ Low distortion, perfect sound quality, energetic and powerful switching power supply (100-240V);
- ◆ Ultra light weight;
- ◆ An ART1000M/ART1200M speaker + ART1000/ART1200 speaker can be set to TWS state to achieve more powerful sound quality.

ART1000 (Amp)

Model	ART 1000 (Amp)
Output power	2 x 300W
Frequency range	20Hz~20kHz

ART1200 (Amp)

Model	ART 1200 (Amp)
Output power	2 x 300W
Frequency range	20Hz~20kHz



Subwoofer without control panel



Subwoofer back



Subwoofer

Technological innovation

STR series

- ◆ Wide range, frequency response 40Hz-20kHz, full band music performance, good clarity, full vocals, dynamic and powerful.
- ◆ Integrate wireless microphone, mixer, peripheral equipment, amplifier, speaker and other devices into one. It simplifies the connection and debugging of the speaker system.
- ◆ Built-in powerful 24bit DSP speaker processing module, with gain, divider, equalization, delay, limit, program memory and other functions;
- ◆ You can directly select the default program design of the manufacturer, or you can optimize the settings yourself.
- ◆ High efficiency 2-way 700W+400W "CLASS-D" amplifier with high power, low distortion and excellent sound quality.
- ◆ Two MIC/LINE inputs with reverberation (REVERB), volume adjustment and DSP adjustment are powerful and easy to operate.
- ◆ Wireless signal transmission function, more convenient to use, with a transmission distance of 30 meters in open space.
- ◆ Switch power design, light weight, stable performance, 220V-240V power supply.
- ◆ Supports TWS Bluetooth signal connection, two speakers Bluetooth when using a pair of STRATOS 5000 (or STRATOS 8000) Bluetooth.
- ◆ You can set it to TWS state to form a stereo state. First set the TWS speaker to be left channel and the other to be right channel.
- ◆ Adjustable ultra-long delay time DSP settings (0.25m steps), when used in cascade of multiple audio systems and when backfield complementary sound systems need to increase the delay, synchronize with the main amplifier column system in phase.
- ◆ Ultra-wide angle covering the listener area, H x V: 100°x70°, can effectively avoid the vertical coverage angle of the vertical linear source is too small defect.
- ◆ The STRATOS retractable bracket allows the line array full-range speaker height to be adjusted as required for optimal sound coverage.



Technological innovation

STR series

3x5" /8" Nd line array full-range transducer

- ◆ 3x5" /8" Nd full-range transducer, high sensitivity, excellent mid frequency and light weight
- ◆ 100°x45° ultra-wide sound coverage range (H x V) can effectively avoid the vertical coverage Angle of the vertical linear sound source is too small defect. High definition, radiation distance, so that the audience can hear the same sound from different angles.



9/12x1" Nd dome HF transducer

- ◆ It has the characteristics of wide frequency response, high definition, wide coverage angle and long radiation distance;
- ◆ Small in size and large in energy, with full-range speakers, it has higher sensitivity and higher power capacity, fast dynamic response, accurate transmission of high frequency details.

Technological innovation

STR series

Subwoofer



Subwoofer

Back

- ◆ 12" (or 15") active subwoofer, with ported design;
- ◆ Built-in 2 way 700W+400W dual-channel amplifier;
- ◆ Mixer with multiple input channels, including 2 Mic/Line inputs, 1 RCA stereo mixed line input, 1 HI-Z line input, 2 XLR line output, and 1 mixed line output;
- ◆ Ultra low frequency volume is controlled separately;
- ◆ External wireless MIC receiving antenna can effectively extend the receiving distance of wireless MIC and obtain better hearing effect.

With multi-channel analog mixer

- ◆ Multi-channel analog mixer (built-in 2-ch wireless microphone);
- ◆ 2x MIC/LINE input (adjustable), 1x RCA stereo input, 1x HI-Z instrument input;
- ◆ Class D amplifier module 2x300W (RMS);
- ◆ Low distortion, perfect sound, energetic and powerful switching power supply;
- ◆ Powerful 24-bit DSP with display, ONE CONTROL encoder, can store preset;
- ◆ Functions such as gain control, delay, two-channel limiter and equalizer;
- ◆ 24bit/48kHz AD/DA conversion.



Analog mixer control panel

Technological innovation

STR series

Wireless microphone antenna

Wireless MIC receiving antenna can effectively extend the receiving distance of wireless MIC and obtain better hearing effect.

LINE/MIC switch

The signal source selection switches are line input and microphone input state gain selection.

DSP CONTROL

DSP set function knob, you can set menu by pressing and rotating.

GAIN

Gain knob, respectively control 1#-4# input signal level.

6.35mm JACK

Signal input socket to connect high input impedance sound source like acoustic guitar.

LINE INPUT

RCA line signal input.

OUTPUT

Sub-speaker signal output.

INPUT socket

Signal input socket, COMBO socket, compatible with XLR and 6.35mm Jack plug.

REVERB ON/OFF

Reverb effect switch, ON: effect on, OFF: effect off.

REVERB

Reverb effect depth adjustment knob.

SUB LEVEL

Subwoofer volume knob.



Wireless microphone series (SRT series)

SRT 5000M/ SRT 8000M

Introduction:

The SRT wireless microphone mobile linear array audio systems includes two speaker systems: SRT5000M and SRT8000M. The SRT5000M mobile line array speaker system consists of 2 wireless microphones + one 3x5 inch neodymium passive line array full-range speaker + one 12 inch active subwoofer with 4 way mixer with two-channel amplifier + one adjustable telescopic stand. The SRT8000M mobile line array speaker system consists of 2 wireless microphones + one 3x8 inch neodymium passive line array full-range speaker + one 15 inch active subwoofer with 4 way mixer with two-channel amplifier + one adjustable telescopic stand.

Technological innovation:

- ◆ The neodymium magnetic dome treble uses silk membrane, which has fine and rounded sound and outstanding detail expression.;
- ◆ 9 /12 treble array layout design, uniform sound field coverage;
- ◆ Extra wide sound coverage 100°x45°(horizontal x vertical);
- ◆ 10" /12" subwoofer provides deep and powerful bass;
- ◆ Class D amplifier module, low distortion, perfect sound, powerful SMPS;
- ◆ Multi - channel mixer:
 - 1.2xMIC/LINE input (adjustable), 1xRCA stereo input, 1xHI-Z instrument input,
 - 2.Powerful 24-bit DSP with display and ONE CONTROL encoder to store presets;Digital gain control, high-pass filter, delay, dual-channel limiter and equalization.

Feature:

- ◆ Built-in powerful 24bit DSP speaker processing module, with gain, divider, EQ, delay, limit, program memory and other functions, you can directly select the default program design of the manufacturer, or you can optimize the settings yourself;
- ◆ High efficiency 2-way 300W "CLASS-D" amplifier with high power, low distortion and excellent sound quality;
- ◆ Subwoofer with high power, low distortion; With foam edge paper basin, low frequency submergence and elasticity, and double-winding voice coil design inside and outside, the transducer can work steadily and reliably under large dynamic conditions.
- ◆ 15mm splint cabinet, slotted stitching, good rigidity, pure sound;
- ◆ High hardness steel grill, special sound transmission cotton inside, provides effective protection for speakers;
- ◆ Wireless transmission signal function, 30 meters in open space, more convenient to use;
- ◆ The surface coating is made of German imported water-based black gold sand paint, which can withstand all kinds of friction and protect the speaker effectively.



SRT 5000M / SRT 8000M

Specification

Model	SRT 5000M	SRT 8000M
Frequency response(-10dB)	40Hz -18kHz	35Hz~18kHz
LF transducer	1x12" /φ63mmVC /350W /4Ω	1x15" /φ100mmVC /500W /4Ω
MF transducer	3x5" /φ39mmVC /80W /2Ω	3x8" /φ39mmVC /80W /12Ω
HF transducer	9x1" /25mmVC / 10W /8Ω	12x1" /25mmVC / 10W /8Ω
Amplifier power	700W(subwoofer)+400W(main speaker)	
Max. SPL@1m	128dB peak	
Coverage(HxV)	100°x70°	
35mm mounting hole	NO	
Input sensitivity	0dB	
Connection	2xCOMBO multifunction socket, 1x6.35mm JACK, 1 pair of RCA stereo hybrid line input	
DSP connection	24bit (2 in 4 out)	
Wireless microphone	Frequency range:470~960MHz Frequency stability: <+/-15ppm Delay: <3ms Frequency response:50~15khz Receive sensitivity: <-105dBm Receive distance:30m(outdoor direct distance)	
Dimension(WxHxD)	408x2149x475mm	483x2442x585mm
Net weight	27 kg	36.5 kg
Package size	188x510x290mm(full-range speaker) 410x600x475mm(subwoofer)	255x729x400mm(full-range speaker) 485x695x585mm(subwoofer)
Gross weight	7.5kg(column) 27.8kg(subwoofer)	7.5kg(column) 37.3kg(subwoofer)
Packing quantity	1pcs(column) 1pcs(subwoofer)	

Dual-channel UHF handheld microphone

- ◆ Using traditional FM modulation technology, it has excellent RF and audio performance. The transmission delay is small, the transmission distance is long, and the product performance is stable;
- ◆ Receiving module selects frequency points through wireless overhead coding, 100 adjustable frequency points;
- ◆ Handheld can save battery power by automatically turning off the handheld by detecting external sound and keeping it in a quiet and silent environment for more than 10 minutes.
- ◆ Specification
 - Power : <10mW
 - Operation current: <150mA
 - Power supply: 1.5V x2 (2 AA batteries)
 - Frequency range: 470~960MHz
 - Transmission frequency stability: <+/-15ppm



Wireless microphone series (SRT series)

SRT 5000 (Amplifier) / SRT 8000 (Amplifier)

Feature:

- ◆ 12" (or 15") active subwoofer, ported design,2 way 700W+400W;
- ◆ Low distortion, perfect sound quality, energetic and powerful switching power supply (100-240V);
- ◆ Ultra light weight;
- ◆ An SRT5000M/ SRT8000M speaker + SRT5000/ SRT8000 speaker can be set to TWS state to achieve more powerful sound quality.

SRT 5000 (Amp)

Model	SRT 5000 (Amp)
Output power	700W+400W
Frequency range	40Hz ~18kHz

SRT 8000 (Amp)

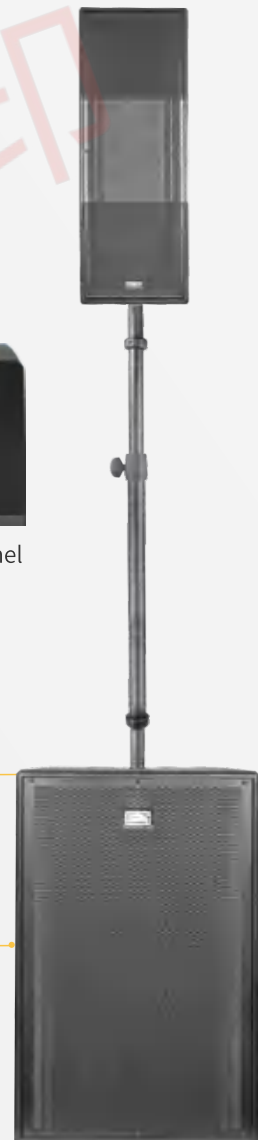
Model	SRT 8000 (Amp)
Output power	700W+400W
Frequency range	40Hz ~18kHz



Subwoofer without control panel



Subwoofer back



Subwoofer(AMP)

非会员水印

Wireless TWIN accessory 10m 5-core cable



Accessory for TWIN



Pull-rod transport cart
Subwoofer (for all model)



Protection bag
For array speaker and
height adjust column

非会员水印

SOUNDKING ELECTRONICS & SOUND CO.,LTD

Ningbo City, Zhejiang Province integrity Road 818

Tel: 400-178-1688

Network: www.soundking.com.cn