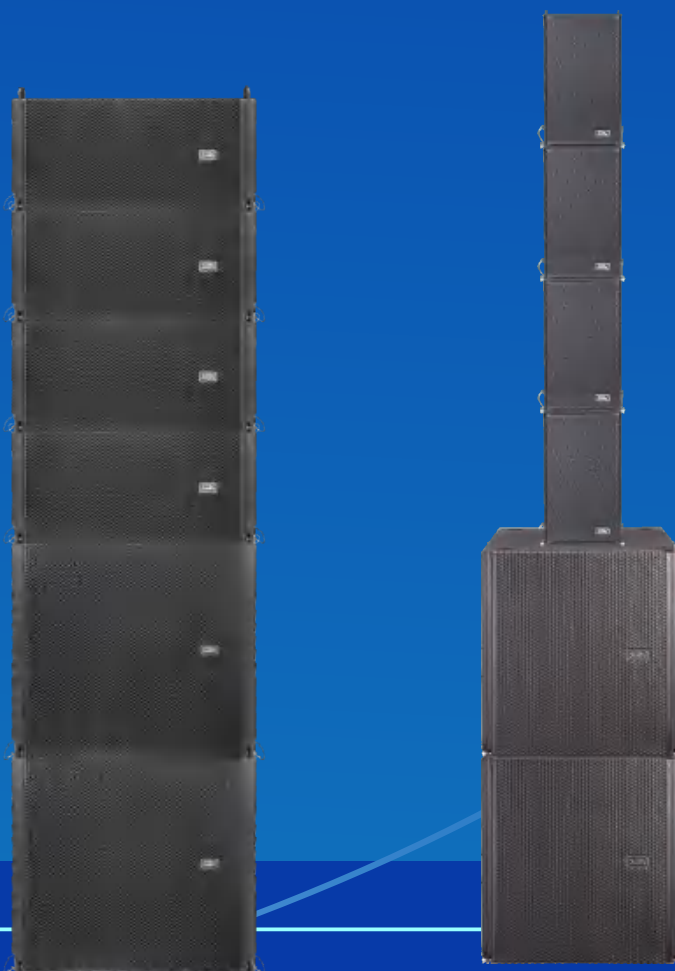




Line Array Speaker Series



High-end brand



Plug and play



Combination



High sensitivity



Speaker Parallel



Easy operation



Multi-mode

R & D Background

Soundking is one of the early priority domestic manufacturers to own the technology of line array speakers.

As early as 2003, after several inspections by the International Art Festival organizing committee and the expert team, the performance and sound quality of the Soundking Line Array speaker were unanimously recognized and praised by experts, and eventually entered the opening ceremony of Changfeng Park, the main venue of the Fifth International Art Festival in Shanghai, and the festival was selected as the main amplifying sound system in the literary and artistic performances of the Shanghai Universal Stadium. It is highly appreciated by Festival leaders, experts and artists.

Since then, the line array speakers have been used for many large-scale Chinese and foreign literary and artistic performances such as the 2003 Harbin International Ice and Snow Festival, the Changchun Heart-to-hart Art Party, the Olympic star concert, and the 2004 Irish tap dance performance.



Technological innovation

- Active Line Array is a truly complete Plug and Play Vertical Diffusion array speaker. Eight debugged programs have been saved in the DSP at the factory.
- Active linear array 4+2, 8+4 can be combined in any way, without the need for additional amplifiers and processors;
- Active Line Array speaker has built-in high-power dual-channel class D switching amplifier module, built-in DSP module, which has the functions of processing frequency division, EQ, pressure limit, delay, volume, etc. DSP can operate easily through the panel with RJ45 network interface on the amplifier panel.
- A variety of usage modes, stackable, hanging, supportable, all kinds of small and medium-sized occasions can be used. Ultra-low frequency speaker has four casters (detachable, optional) at the rear for easy handling.



Plug and play



Combination



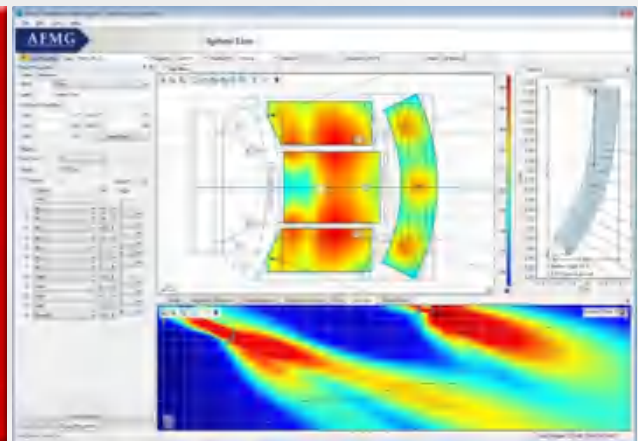
Easy operation



Multi-mode

Soundking's high-end flagship products, used in various mid-to-high-end markets, have been included in the EASE library.

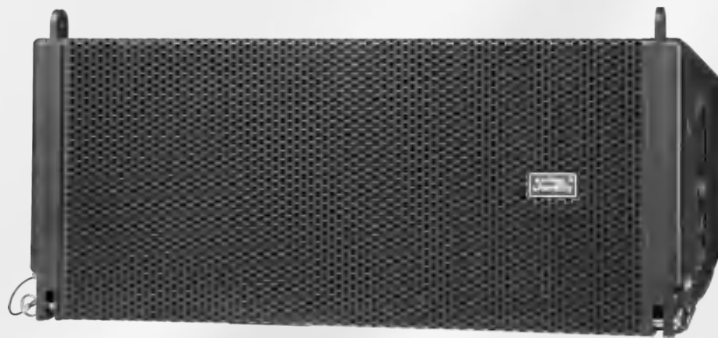
Soundking line array speakers create new technical highlights in the industry.



Product Items

G310—dual 10” 3-way line array full range speaker

G310



G312-dual 12" 3-way line array full range speaker

G312



GL218S—dual 18” subwoofer(use with G310/G312)
GL218SL—dual 18” subwoofer (use with G310/G312)

GL218S/GL218SL



GL26A—6.5” active coaxial 2-way line array full range speaker
GL26SA—active single 15” subwoofer(use with GL26A)



GL206A—6.5” plastic line array active speaker
GL206—6.5” plastic line array passive speaker

GL206A/GL206



GL206SA—single 15” line array active subwoofer(use with GL206A)

GL206SA



Product Items

FHE12M-12" passive monitor speaker

FHE12M/FHE15M



FHE15M-15" passive monitor speaker

FHE15M+Waterproof



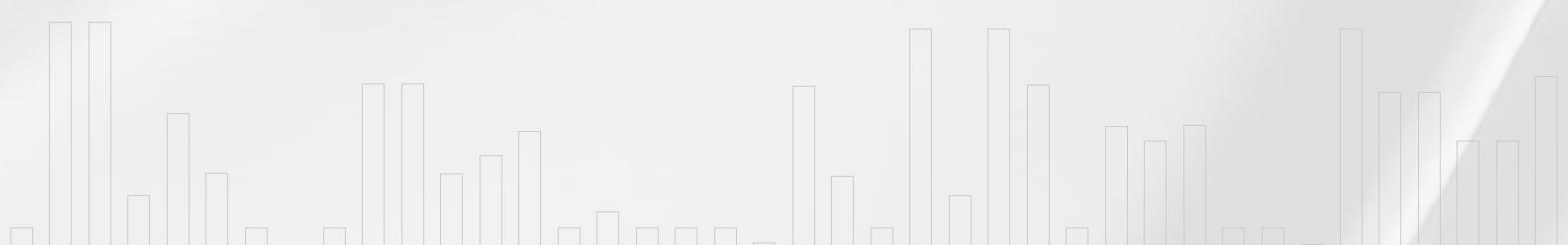
FHE15M+Waterproof-15" waterproof passive monitor speaker

FHE12MA-12" active monitor speaker

FHE12MA/FHE15MA



FHE15MA-15" active monitor speaker



Applications



Gym/ stadium



Indoor performance



Theatre



Large/medium-sized multi-purpose hall in hotel, school and institution



Outdoor performance/ large theme park



All kinds of cinemas

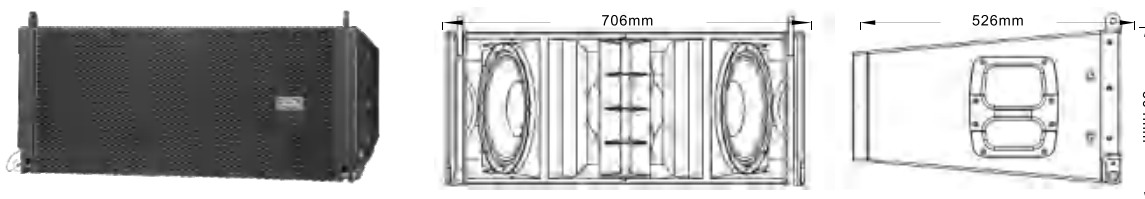
Dual 10" 3-way Line Array Full Range Speaker G310

The 3-way speaker divides the sound into HF, MF and LF, and each frequency band is processed separately by the corresponding transducer, so that the sound can have a more delicate restoration, and the sound is more pleasant. The 3-way line array speaker is a high-end product in the line array speaker, with high technical difficulty, long R&D time, better sound effect, higher power and higher SPL.



Features:

- Sondking G310 is a dual 10" 3-way line array speaker. All the HF, MF and LF use neodymium magnetic transducer. It is small, light and has a high SPL. It is compact with a width of 706 mm and weighs only 34 kg. Even lighter than many brands of dual 10" 2-way line array speakers, the G310 is very light and flexible, allowing for use in a variety of small and medium-sized amplification occasions.
- The G310 has a peak pressure level output of 142dB with a high SPL and can also be used in large mobile shows and stadiums. Large stadium performances need to cover up to 100M distances. The G310 uses 2 3" treble with enough treble to cover a long distance.
- G310 adopts MF and HF coaxial arrangement, which is an advanced international and domestic technology.



Innovations

Dual 10" Passive 3-way Line Array Speaker G310

G310

Core Technology:

- Two 3" voice coil neodymium magnetically compressed tweeter can have lower crossover points, resulting in better axial frequency response and improved clarity; The treble with a sensitivity of up to 113dB is mounted on the waveguide horn of the line array, which has a higher treble margin and can make a larger mid-high frequency boost to compensate for the mid-high frequency attenuation in the far field.
- Placed behind the treble is a MF transducer with an 8.50mm Nd magnet speaker cone, forming a coaxial structure for the mid-treble.
- MF sensitivity up to 105dB;
- The lower limit of 8 inch mid-range audio frequency is as low as 200 Hz;
- Two 10" paper basin 75mm voice coil Nd magnet bass are V-shaped placed on both sides of the woofer.



Definition



Sensitivity



Structure



High

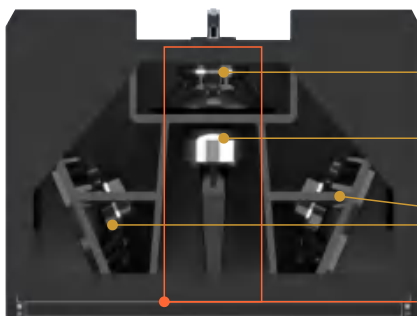


Lower limit



V-shape

The specially reinforced paper basin greatly improves the rigidity of the speaker cone, making the G310's performance in the mid-low frequency particularly strong and powerful.



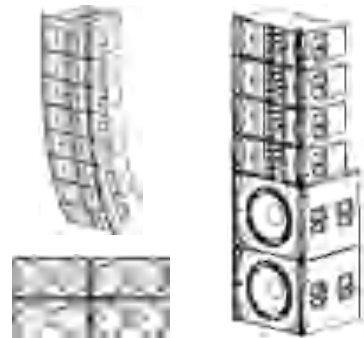
8" neodymium magnetic MF transducer

2.3" neodymium magnetically high compressor combined treble

2.10" neodymium magnetic bass

MF and HF coaxial arrangement

Multi-installation mode



hanging(fixed mount) stacking(mobile show)

Specification



Model	G310
Frequency response	50Hz~20KHz (-10dB) 60Hz~18KHz (±3dB)
Coverage(HxV)	90° (H) x 10° (V)
Sensitivity(1W@1m)	LF:99dB MHF:110dB
Nominal impedance	LF:16Ω MHF:16Ω
Rated power	LF:900W MHF:400W
Max. SPL (@1m)	LF:135dB MHF:142dB
Recommend crossover point	250Hz
Angle	0°,1°,2°,3°,4°,5°,6°,7°,8°,9°,10°
LF transducer	2x10"/ 3" VC/ Nd magnet/ 8Ω
MF transducer	1x8"/ 2" VC/ Nd magnet/ 16Ω
HF transducer	2x3" compression driver/ Nd magnet/ 8Ω
Package size	835x640x450mm
Gross weight	40kg
Quantity	1pcs
Product size	706x304x526mm
Net weight	34kg

Dual 12” 3-way line array full range speaker G312

The G312 line array speaker is a 2-ch 3-way system. Two 1.75-inch tweeters, two 6.5-inch neodymium magnetic MF transducer and a 12-inch neodymium magnetic bass form a combination with large dynamic range, and greatly reduce the weight of the speaker, providing extremely high sound pressure/volume ratio. A built-in frequency divider is added between the speaker HF and MF, and an external 2-way amplifier drives the speaker.

The MLF transducers of G312 use a high-power 12-inch speaker cone neodymium magnetic bass. The MF transducer consists of two highly sensitive 6.5-inch neodymium magnetic units. The HF transducer uses two 1.75-inch tweeters to convert the high-frequency waveform from spherical to equal-phase planar through a planar wave converter, which greatly reduces the high-frequency interference effect and greatly improves the sound clarity over a long distance. At the same time, it combines an exponential curve with a constant direction sign to produce a consistent wavefront. The enclosure of G312 is trapezoidal, and the gap between enclosure has been minimized. The adjustable angle of each enclosure is 0-10 degrees.

The G312 is equipped with a precision flying system. The angle of connection between each speaker can be adjusted from 0 to 10 degrees by adjusting the connecting rod at the back to meet the needs of different occasions. The cabinet is mounted on the surface of the speaker with a flat embedded handle. The handle is completely ergonomic, elegant and handy for easy handling. The surface is wear-resistant black gold sand paint.



Gain



Crossover



Equalize



Delay



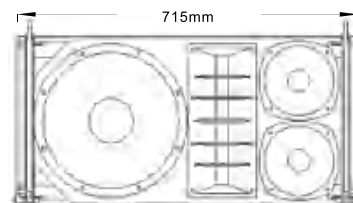
Limit



Procedural memory

Features:

- The G312 line array speaker is a 1-ch 3-way speaker. One 1.75-inch tweeters, two 6.5-inch neodymium magnetic MF transducer and a 12-inch neodymium magnetic bass form a combination with large dynamic range, and greatly reduce the weight of the speaker, providing extremely high sound pressure/volume ratio.
- The LMHF transducer all use neodymium magnet, ensuring high sensitivity and light weight. Imported LMF speaker cone.



Innovation

Dual 12" 3-way line array speaker

G312

- The enclosure of G312 is trapezoidal, and the gap between enclosure has been minimized. The adjustable angle of each enclosure is 0-10 degrees.
- The G312 is equipped with a precision flying system. The angle of connection between each speaker can be adjusted from 0 to 10 degrees by adjusting the connecting rod at the back to meet the needs of different occasions.
- The cabinet is mounted on the surface of the speaker with a flat embedded handle. The handle is completely ergonomic, elegant and handy for easy handling. The surface is wear-resistant black gold sand paint.



Reliable



Powerful



Excellent sound



Flexible

Rear panel of subwoofer



It can be hanged, supported and stacked in various ways.



hanging(fixed mount)



Stacked (mobile show)



stacking(mobile show)

Specification



Model	G312
Frequency response	60Hz~20KHz
Coverage(HxV)	90° (H) x 10° (V)
Sensitivity(1W@1m)	LF:99dB MHF:108dB
Nominal impedance	LF:8Ω MHF:8Ω
Rated power	LF:400W MHF:250W
Max. SPL (@1m)	LF:131dB MHF:138dB
Recommend crossover point	250Hz
Angle	0°,1°,2°,3°,4°,5°,6°,7°,8°,9°,10°
LF transducer	1x12" / Nd magnet
MF transducer	2x6.5" / Nd magnet
HF transducer	2x1.75" compression driver/ Nd magnet
Package size	845x525x505mm
Gross weight	35kg
Quantity	1pcs
Product size	715x357x410mm
Net weight	31kg

Dual 18" Subwoofer (use with G310/G312) GL218S/GL218SL

GL218S/GL218SL passive, no airflow noise at all, 2 high-performance high-power long-stroke 18" drivers, using 100mm voice coil speaker cone, bringing high-efficiency wide-range dynamic output, even if it is far away from the speaker, the surging energy of low frequency can also be clearly felt. The cabinet is made of 18mm birch plywood, the surface is sprayed with wear-resistant black sand grain paint, and 4 large handles are distributed on both sides, making it easier and more convenient to operate and transport. It is used as a matching subwoofer for large, medium and small line array speakers.



Features:

- GL218S/GL218SL passive subwoofer can be used as a matching subwoofer for large, medium and small line array speakers;
- 2 high-performance high-power long-stroke 18" drivers, using 100mm voice coil imported speaker cone;
- Made of 18mm birch plywood, the surface is sprayed with wear-resistant black sand grain paint, and 4 large handles are distributed on both sides, making it easier and more convenient to operate and transport;
- Use as a matching subwoofer for large, medium and small line array speakers.

Model	GL218S	GL218SL
Frequency response	32Hz~200Hz	32Hz~200Hz
Sensitivity(1W@1m)	99dB	99dB
Max. SPL(@1m)	138dB	137dB
Rated power	Constant:2000W Peak:8000W	Constant:1600W Peak:6400W
Nominal impedance	4Ω	4Ω
Input mode	2xspeakon	2xspeakon
LF transducer	2x18" bass/ 100mm VC/ 2000W/4Ω	2x18" bass/ 100mm VC/ 1600W
Quantity	1pcs	1pcs
Product size	1115x585x758mm	1115x585x758mm
Net weight	83kg	83kg
Package size	1305x895x720mm	1305x895x720mm
Gross weight	92.3kg	92.3kg

6.5" Active Coaxial 2-way Line Array Full Range Speaker GL26A

The GL26A line array speaker provides a frequency range of 70Hz-20KHz with smooth frequency and phase response. Eight 1-inch neodymium dome tweeters and two 6.5-inch neodymium mid-woofers form a combination with great dynamic. The tweeters are arranged in a coaxial array above the mid-bass transducer, and the sound image positioning is more accurate, improving the uniformity and clarity of the far-field sound field of the line array speakers. The speaker is equipped with an independent high-power amplifier and DSP, the speaker can be adjusted separately, and the number of connections can be configured according to the actual size of the situation, making the live sound reinforcement extremely flexible and convenient.



Features:

- The main speaker GL26A is small and light. The combination with great dynamic margin uses eight 1 inch neodymium dome HF unit and two 6.5 inch neodymium MF/LF unit. The sound degree is as high as 129dB. The treble coaxial array is arranged above the mid bass, so that the sound image positioning is more accurate, and the far-field sound field uniformity and clarity are improved.
- HiFi-grade neodymium dome tweeter for high fidelity sound;
- The main speaker adopts 400W+150W efficiency D power amplifier, with high power and low distortion. Built-in powerful 24bit DSP speaker processing module have gain, crossover, equalization, delay, limit, program memory and other functions.
- Factory built-in multiple preset, plug and play. All speakers can be controlled online through 485 network.
- Flexible multi-combination application, including hanging, stacking and supporting, can meet the requirements of sound reinforcement projects.

Type	Active coaxial 2-way line array full range speaker
Power supply	230V/115V
Frequency response	70Hz~20kHz
Coverage(HxV)	120°x8°
LMF transducer	2x6.5" Nd magnet
HF transducer	8x1" Nd magnet dome tweeter
Amplifier power	400 W+150W
Max. SPL(@1m)	129dB
Sensitivity(1W@1m)	0dBu
Quantity	1pcs
Product size	205x354x340mm
Net weight	8.5kg
Package size	500x450x320mm
Gross weight	11.1kg

Single 15" active subwoofer (dedicated for GL26A) GL26SA

The GL26SA line array speaker provides a frequency range of 40Hz-150Hz with a high-power 15-inch subwoofer. The speaker is equipped with a separate high amplifier and DSP. The speakers can be adjusted individually, and the number of connections is configured according to the size of the actual situation, which makes the on-site sound amplification extremely flexible and convenient. The GL26SA amplifier uses high efficiency switching power supply with built-in DSP module, which has functions such as processing crossover, EQ, pressure limit, delay, volume, etc. The DSP can be operated easily through the panel with RS485 network interface on the amplifier panel. The cabinet is equipped with a precision flying system to meet the needs of different occasions. Two handles embedded flush with the cabinet are on both sides for easy handling. **One GL26SA with three GL26A.**



Features:

- The GL26SA line array speaker provides a frequency range of 40Hz-150Hz with a high-power 15-inch subwoofer. The speaker is equipped with a separate high amplifier and DSP. The speakers can be adjusted individually, and the number of connections is configured according to the size of the actual situation, which makes the on-site sound amplification extremely flexible and convenient.
- The GL26SA amplifier part uses high efficiency switching power supply with built-in DSP module, which has functions such as processing crossover, EQ, pressure limit, delay, volume, etc. The DSP can be operated easily through the panel with RS485 network interface on the amplifier panel. The single 15 inch active ultra low frequency speaker GL26SA with 1200W high power enhances the low frequency limit of the system.
- Factory built-in multiple preset, plug and play. All speakers can be controlled online through 485 network.
- The matching 15" subwoofer can be hung with the full-range speaker.
- Flexible multi-combination application, including hanging, stacking and supporting, can meet the requirements of sound reinforcement projects.

Type	Active single 15" subwoofer
Power supply	230V
Frequency response	40Hz~150Hz
LF transducer	1x15" Ferrite
Amplifier power	1200W
Max. SPL(@1m)	130dB
Sensitivity(1W@1m)	0dBu
Quantity	1pcs
Product size	474x506x673mm
Net weight	41kg
Package size	605x640x785mm
Gross weight	47.8kg

6.5" line array plastic speaker

GL206 is a multi-purpose plastic line array speaker. The full-range main speaker is made of high strength PP composite material with smooth frequency and phase response. A 3-inch neodymium magnet treble compression and two 6.5-inch bass units form a very large dynamic balance. The main speaker is small in size and light in weight. Easy installation and debugging, flexible multi-combination application mode, can be perfectly applied in all kinds of sound amplification occasions.



Features:

- The impedance of GL206 is 16Ω, and four speakers can be connected in parallel; the impedance of GL206S is 8Ω, and two speakers can be connected in parallel. With a high-power 4-channel amplifier, the number of amplifiers is greatly saved, and a small-sized cabinet can be used to reduce the cost of the entire system and facilitate transportation;
- The cabinet of GL206A is made of PP composite material (made of large plastic shell moulds). It is light weight and strong.
- GL206A uses a 3" neodymium magnet tweeter compression unit and two 6.5" bass units to form a combination of a large dynamic, lower crossover points, and a smooth biased response.
- A variety of usage modes, such as stacking, hanging, supporting, can be used in all kinds of occasions;

Model	2-way line array full-range passive plastic speaker
Frequency response	70Hz~20kHz
Sensitivity(1W@1m)	100dB
Rated power	400W
Max. SPL(@1m)	132dB
Coverage(HxV)	100°x10°
LF transducer	2x6.5" LMF transducer/φ38mm VC /8Ω
HF transducer	1x3" Nd magnet tweeter/ φ74mm VC/ 4Ω
Cabinet material	PP composite material
Quantity	1pcs
Product size	470x207x341mm
Net weight	14kg
Package size	600x335x450mm
Gross weight	17kg

6.5” Plastic Line Array Active speaker GL206A

The GL206A line array speaker has smooth frequency and phase response. A 3-inch neodymium magnetic tweeter compression unit and two 6.5-inch woofers form a combination with great dynamic. The speaker is equipped with an independent high-power amplifier and DSP, the speaker can be adjusted separately, and the number of connections can be configured according to the actual size of the situation, making the live sound reinforcement extremely flexible and convenient. GL206A amplifier uses high-efficiency switching power supply, built-in DSP module, with functions such as processing frequency division, EQ, voltage limit, delay, volume and so on. The DSP can be operated through the panel, and the power amplifier panel has an RS485 network interface.



Features:

- The cabinet of GL206A is made of PP composite material (made of large plastic shell moulds). It is light weight and strong.
- GL206A uses a 3" neodymium magnet tweeter compression unit and two 6.5" bass units to form a combination of a large dynamic, lower crossover points, and a smooth biased response.
- The main speaker adopts 400W+150W high-efficiency class D amplifier, with high power and low distortion. Built-in powerful DSP speaker processing module, with gain, frequency division, equalization, delay, pressure limit, program memory and other functions;
- Factory built-in multiple preset, plug and play. All speakers can be controlled online through 485 network.
- A variety of usage modes, such as stacking, hanging, supporting, can be used in all kinds of occasions;
- The logo on the speaker grille has a light effect.

Frequency response	70Hz~20kHz
Amplifier power	400 W+150W
Max. SPL(@1m)	130dB
Coverage(HxV)	100°x10°
LF transducer	2x6.5” LMF transducer/φ38mm VC /100W /4Ω
HF transducer	1x3” Nd magnet tweeter/ φ74mm VC/ 80W/ 4Ω
Sensitivity(1W@1m)	0dBu
Quantity	1pcs
Product size	470x207x341mm
Net weight	15kg
Package size	600x335x450mm
Gross weight	17kg

Single 15" Line Array Active Subwoofer (use with GL206A) GL206SA

The GL206SA line array speaker with a high-power 15-inch subwoofer. The speaker is equipped with a separate high amplifier and DSP. The speakers can be adjusted individually, and the number of connections is configured according to the size of the actual situation, which makes the on-site sound amplification extremely flexible and convenient. The GL206SA amplifier uses high efficiency switching power supply with built-in DSP module, which has functions such as processing crossover, EQ, pressure limit, delay, volume, etc. The DSP can be operated easily through the panel with RS485 network interface on the amplifier panel. The cabinet is equipped with a precision flying system to meet the needs of different occasions. Two handles embedded flush with the cabinet are on both sides for easy handling. **One GL206SA with three GL206A.**



Features:

- The GL206SA line array speaker provides a frequency range of 40Hz-150Hz with a high-power 15-inch subwoofer. The speaker is equipped with a separate high amplifier and DSP. The speakers can be adjusted individually, and the number of connections is configured according to the size of the actual situation, which makes the on-site sound amplification extremely flexible and convenient.
- The GL206SA amplifier part uses high efficiency switching power supply with built-in DSP module, which has functions such as processing crossover, EQ, pressure limit, delay, volume, etc. The DSP can be operated easily through the panel with RS485 network interface on the amplifier panel. The single 15 inch active ultra low frequency speaker GL206SA with 1200W high power enhances the low frequency limit of the system.
- Factory built-in multiple preset, plug and play. All speakers can be controlled online through 485 network. Flexible multi-combination application, including hanging, stacking and supporting, can meet the requirements of sound reinforcement projects.

Frequency response	40Hz~150Hz
Amplifier power	1200W
Max. SPL(@1m)	130dB
LF transducer	1x15" Ferrite/ ϕ 100mm VC/ 800W/ 8 Ω
Sensitivity(1W@1m)	0dBu
Quantity	1pcs
Product size	474x506x673mm
Net weight	41kg
Package size	785x490x605mm
Gross weight	47.8kg

Monitor Speaker FHE12M/FHE15M

The FHE12M/FHE15M is specially designed for stage monitoring and is designed with a 2-way speaker system. The LF transducer is a high-power woofer, which is strong and full of energy. The HF transducer adopts a 1.7" compression driver + constant directivity horn, PEEK sound film, which has ultra-high resolution, and also ensures the fullness and transparency of the mid-frequency, effectively improving the clarity of the speaker, and making the sound field more uniform. 45° and 20° angles are available, suitable for different stage monitoring distance requirements. The square horn design can easily adjust the horizontal and vertical coverage angles to suit different stage areas.



Features:

- Woofer with high power and low distortion. The diaphragm is made of carbon fiber composite pulp, which is light in weight and good in rigidity. The appropriate cone apex angle and breathable cloth composite edge paper cone can effectively broaden the intermediate frequency characteristics and have a good transient response;
- The bass unit adopts cone-shaped drum paper, and the folding ring adopts M-edge design, which not only ensures the restoration of the original sound, but also reduces various distortions caused by the movement of the system;
- The specially designed frequency response characteristics and linear phase characteristics make the sound quality better, the sound image positioning is clear, and it is more suitable for live stage monitoring and sound reinforcement;
- 15mm plywood enclosure, grooved splicing, good rigidity, pure sound, and the surface is sprayed with high-hardness granular embossed paint;
- The high-hardness steel mesh with arc-shaped design and special sound-transmitting cotton is adhered inside to provide effective protection for the speaker;
- There are 7 built-in M10 steel hoisting screw hole devices that can be hung in all directions to meet the needs of different use occasions; the built-in LC crossover network uses high-precision and high-quality electronic components to ensure the true restoration of sound quality.

Model	FHE12M	FHE15M
Frequency response	55Hz~20kHz (±10dB)	50Hz~20kHz (±10dB)
Power	350W	350W
Max. SPL	(@1m)127.5dB(peak)	(@1m)128.5dB(peak)
Coverage	90°x40°	90°x40°
Crossover point	2.2kHz	2.2kHz
Sensitivity	96dB	97dB
Impedance	8Ω	8Ω
Connector	2xSPEAKON	2xSPEAKON
LF transducer	1x12" / φ75mm VC/ 350W/ 8Ω	1x15" / φ75mm VC/ 350W/ 8Ω
HF transducer	1x1.73" / φ44mm VC/ 40W/ 8Ω	1x1.73" / φ44mm VC/ 40W/ 8Ω
Quantity	1pcs	1pcs
Product size	604x360x33mm	696x415x386mm
Net weight	19kg	24kg
Package size	47x440x710mm	805x530x510mm
Gross weight	22.5kg	30kg

15" Waterproof Monitor Speaker FHE15M+Waterproof

The FHE15M+waterproof is specially designed for stage monitoring and is designed with a 2-way speaker system. The LF transducer is a high-power 15" woofer, which is strong and full of energy. The HF transducer adopts a 1.7" compression driver + constant directivity horn, PEEK sound film, which has ultra-high resolution, and also ensures the fullness and transparency of the mid-frequency, effectively improving the clarity of the speaker, and making the sound field more uniform. 45° and 20° angles are available, suitable for different stage monitoring distance requirements. The square horn design can easily adjust the horizontal and vertical coverage angles to suit different stage areas.



Features:

- 15" woofer with high power and low distortion. The diaphragm is made of carbon fiber composite pulp, which is light in weight and good in rigidity. The appropriate cone apex angle and breathable cloth composite edge paper cone can effectively broaden the intermediate frequency characteristics and have a good transient response;
- The bass unit adopts cone-shaped drum paper, and the folding ring adopts M-edge design, which not only ensures the restoration of the original sound, but also reduces various distortions caused by the movement of the system;
- The specially designed frequency response characteristics and linear phase characteristics make the sound quality better, the sound image positioning is clear, and it is more suitable for live stage monitoring and sound reinforcement;
- 15mm plywood enclosure, grooved splicing, good rigidity, pure sound, and the surface is sprayed with high-hardness granular embossed paint;
- The high-hardness steel mesh with arc-shaped design and special sound-transmitting cotton is adhered inside to provide effective protection for the speaker;
- There are 7 built-in M10 steel hoisting screw hole devices that can be hung in all directions to meet the needs of different use occasions; the built-in LC crossover network uses high-precision and high-quality electronic components to ensure the true restoration of sound quality.
- All parts of FHE15M (waterproof) speakers are designed according to international dustproof and waterproof grade standards.

Frequency response	50Hz~20kHz(±10dB)
Power	350W
Max. SPL	(@1m)128.5dB(peak)
Coverage	90°x40°
Crossover point	2.2kHz
Sensitivity	97dB
Impedance	8Ω
Connector	2xSPEAKON
LF transducer	1x15" / φ75mm VC/ 350W/ 8Ω
HF transducer	1x1.73" / φ44mm VC/ 40W/ 8Ω
Quantity	1pcs
Product size	696x415x386mm
Net weight	24kg
Package size	805x530x510mm
Gross weight	30kg

12" Active Monitor Speaker FHE12MA

The FHE12MA is specially designed for stage monitoring and is designed with a 2-way speaker system. The LF transducer is a high-power 12" Nd magnetic woofer, which is strong and full of energy. The HF transducer adopts a 1.7" compression driver + constant directivity horn, PEEK sound film, which has ultra-high resolution, and also ensures the fullness and transparency of the mid-frequency, effectively improving the clarity of the speaker, and making the sound field more uniform. 45° and 20° angles are available, suitable for different stage monitoring distance requirements. The square horn design can easily adjust the horizontal and vertical coverage angles to suit different stage areas. The 2-way Class-D audio amplifier, which has the advantages of high efficiency, small size, high power, light weight and stable performance.



Features:

- 12" Nd magnetic woofer with high power and low distortion. The diaphragm is made of carbon fiber composite pulp, which is light in weight and good in rigidity. The appropriate cone apex angle and breathable cloth composite edge paper cone can effectively broaden the intermediate frequency characteristics and have a good transient response;
- The HF compression driver uses PEEK sound film, which has good ultra-high frequency characteristics and a softer sound quality than titanium alloy sound film. The magnetic circuit structure with short circuit ring design effectively reduces the third harmonic distortion.
- The specially designed frequency response characteristics and linear phase characteristics make the sound quality better, the sound image positioning is clear, and it is more suitable for live stage monitoring and sound reinforcement;
- 15mm plywood enclosure, grooved splicing, good rigidity, pure sound, and the surface is sprayed with high-hardness granular embossed paint;
- The high-hardness steel mesh with arc-shaped design and special sound-transmitting cotton is adhered inside to provide effective protection for the speaker;
- There are 7 built-in M10 steel hoisting screw hole devices that can be hung in all directions to meet the needs of different use occasions; the built-in LC crossover network uses high-precision and high-quality electronic components to ensure the true restoration of sound quality.
- **Class-D 2-way audio amplifier, which has the advantages of high efficiency, small size, large power, light weight and stable performance. High and bass two-stage equalization knob for easy tone adjustment on the spot.**

Frequency response (-10dB) 55Hz~20kHz

Amplifier power 1x300W+1x80W

Max. SPL (@1m)125dB(peak)

Coverage 90°x60°

Input sensitivity 0dBu

Connector 1xCOMBO Multi-use sockets

LF transducer 1x12" / ϕ 75mm VC / 400W / 4 Ω

HF transducer 1x1.73" / ϕ 44mm VC / 40W / 8 Ω

Quantity 1pcs

Product size 608x360x335mm

Net weight 22kg

Package size 480x445x715mm

Gross weight 28kg

15" Active Monitor Speaker FHE15MA

The FHE15MA is specially designed for stage monitoring and is designed with a 2-way speaker system. The LF transducer is a high-power 15" woofer, which is strong and full of energy. The HF transducer adopts a 1.7" compression driver + constant directivity horn, PEEK sound film, which has ultra-high resolution, and also ensures the fullness and transparency of the mid-frequency, effectively improving the clarity of the speaker, and making the sound field more uniform. 45° and 20° angles are available, suitable for different stage monitoring distance requirements. The square horn design can easily adjust the horizontal and vertical coverage angles to suit different stage areas.



Features:

- 15" woofer with high power and low distortion. The diaphragm is made of carbon fiber composite pulp, which is light in weight and good in rigidity. The appropriate cone apex angle and breathable cloth composite edge paper cone can effectively broaden the intermediate frequency characteristics and have a good transient response;
- The HF compression driver uses PEEK sound film, which has good ultra-high frequency characteristics and a softer sound quality than titanium alloy sound film. The magnetic circuit structure with short circuit ring design effectively reduces the third harmonic distortion.
- The specially designed frequency response characteristics and linear phase characteristics make the sound quality better, the sound image positioning is clear, and it is more suitable for live stage monitoring and sound reinforcement;
- 15mm plywood enclosure, grooved splicing, good rigidity, pure sound, and the surface is sprayed with high-hardness granular embossed paint;
- The high-hardness steel mesh with arc-shaped design and special sound-transmitting cotton is adhered inside to provide effective protection for the speaker;
- There are 7 built-in M10 steel hoisting screw hole devices that can be hung in all directions to meet the needs of different use occasions; the built-in LC crossover network uses high-precision and high-quality electronic components to ensure the true restoration of sound quality.
- **The built-in LC crossover network uses high precision and high quality electronic components to ensure the true restoration of sound quality. High and bass two-stage equalization knob for easy tone adjustment on the spot.**

Frequency response 50Hz~20kHz(±10dB)

Power 350W

Max. SPL (@1m)128.5dB(peak)

Coverage 90°x40°

Crossover point 2.2kHz

Sensitivity 97dB

Impedance 8Ω

Connector 2xSPEAKON

LF transducer 1x15" / φ75mm VC/ 350W/ 8Ω

HF transducer 1x1.73" / φ44mm VC/ 40W/ 8Ω

Quantity 1pcs

Product size 696x415x386mm

Net weight 24kg

Package size 805x530x510mm

Gross weight 30kg

Accessories

SK46 Adaptive Sound Field Controller

Based on the world-leading audio development platform, SK46 Adaptive Field Controller has **powerful processing power, approximates the audio quality of analog audio, and is easy to test.** The unique algorithm only needs to take microphone measurements at one point in the room or at multiple points in a large space, each measuring point takes only three seconds, has great tolerance for noise in space, and then takes ten seconds to discover phase problems in the system, and automatically sends processing parameters to the field programmer.

In this series of processes, no human intervention is required, just put the microphone on and press the measurement key.



Processing



Analog quality



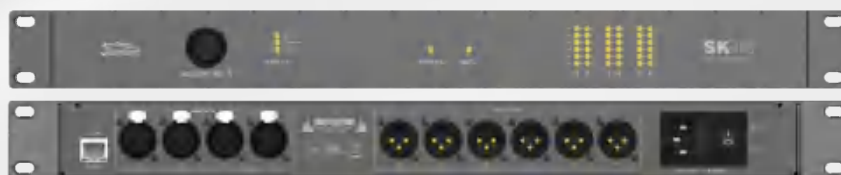
Easy test



Quick operate



Tolerance



AM series Amplifier

Multi-channel high-power professional amplifier, designed with switching power supply and TD technology, has close efficiency to Class D amplifier, and the sound quality of Class AB amplifier. The key components of the amplifier are customized.



IoT Smart Power Manager

It is composed of smart terminal device, setup software, system deployment platform or operation software. It has functions of power protection, remote operation control, power statistics, timing, and large data management.

Real-time data feedback monitoring and control can be achieved, line temperature monitoring, real-time digital meters, current, accurate voltage and power monitoring, real-time monitoring of power data, remote and local control of the safety monitoring and operation of the field, real-time monitoring of equipment abnormalities and early warning.

