

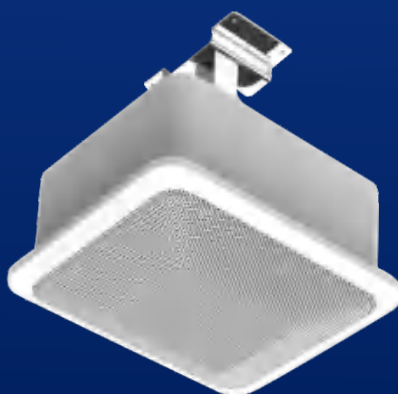
HC series



HC-F series



FCL04 / FCL05



PH06



FCL04/FCL05/FCL06
FCL08/FCL10/FCL12

Coaxial Installation Loudspeakers



Accurate positioning



Uniform coverage



Nd magnetic dome Hi-Fi



Multi-application



Immersive



R & D Background

Throughout the current international environment, various uncertainties have deeply affected all kinds of industry. Especially in the audio industry, based on market development and customer demand, Soundking found: the traditional speaker technology is gradually replaced by coaxial speakers. The advantages of coaxial speakers are the use of point sound source sound reinforcement, accurate sound image positioning, uniform coverage, and high vocal clarity. Therefore, traditional speakers will gradually withdraw from the market in different market fields, and the unique technical advantages of coaxial speakers have become the irreversible development direction of industry demand.

The research and development of coaxial speaker technology has lasted for 6 years. And now it has been fully promoted to the market, and it can be compared with well-known foreign brands, and even some technologies have surpassed the level of well-known foreign brands, and its comprehensive cost performance is far higher than internationally renowned brands.



Patent

6.5" Multi-directivity Coaxial speaker PH06
Practical new patent number: 2021121067811.5





Product Family

- **HC Series Passive Fixed Resistance/ Fixed Voltage Speaker**
(aluminum/plastic/wooden)
Coaxial in-ceiling/hanging

Fixed resistance: HC4/4F HC5/5F HC6/6F
HC8/8F HC10/10F

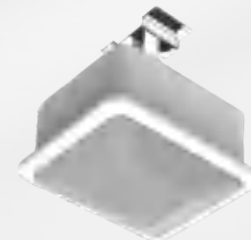
Fixed voltage: HC4T/4FT HC5T/5FT HC6T/6FT
HC8T/8FT HC10T/10FT



4"-10"

- **PH Series Multi-directivity Passive Speaker for Conference**
Fixed resistance/ Fixed voltage coaxial

Fixed resistance: PH06
Fixed voltage: PH06T



6"

- **FCL Series Passive Fixed Resistance Coaxial Speaker (Aluminum)**

Fixed resistance: FCL04L / FCL04LS
FCL05L / FCL05LS



4"-5"

- **FCL Series Passive Coaxial Speaker**

FCL04H/FCL05H/FCL06H
FCL08H/FCL10H/FCL12C/FCL12H



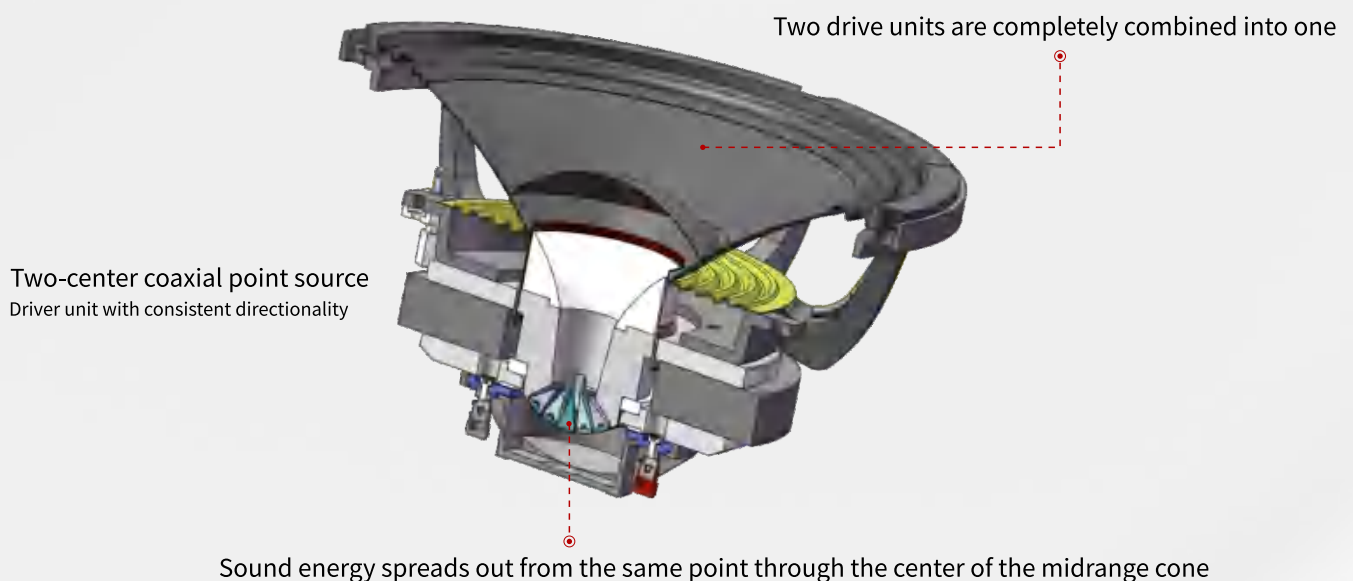
4"-12"



Technology Innovations

- ◉ Coaxial drive technology to realize natural sound and improve the clarity.
- ◉ Compact, stylish and professional design.
- ◉ Variety of mounting methods, hanging or embedded, which is convenient for installation.
- ◉ High power, high sensitivity, powerful and clear sound, accurate sound image positioning, uniform sound field coverage, restore the 3D sound effect, suitable for indoor sound reinforcement.
- ◉ Speaker components are all imported, and can be customized if needed.

True point source





Applications

It is very suitable for large, medium and small conference rooms, classrooms, stations, shopping malls and other occasions; it can also be used in medium and high-end conferences, background music, multi-function halls, command centers, etc.



HC series coaxial speaker: 4"/5"(aluminum), 6"/8"(plastic), 10"(wooden). It integrates the latest electro-acoustic design, adopts the point source coaxial sound reinforcement method, and has a wide coverage. It is the company's flagship product for indoor hanging installation; **Round and square shapes, customers can choose according to decorative environment.** In-ceiling and hanging installation method for choice to achieve the best sound reinforcement.

- ⦿ Components are all imported, and can be customized if needed. High-power, high sensitivity, suitable to indoor sound reinforcement.
- ⦿ Design with coaxial point source transducer, neodymium magnetic low/high transducer ensure the features of high sensitivity, less distortion, lightweight.
- ⦿ Round/rectangular version, fixed resistance/fixed voltage for different applications
- ⦿ Two different installation methods: in-ceiling or spacer-bar hanging from the ceiling
- ⦿ HC4F/5F/6F/8F/10F is square in shape. Both domestic and foreign installation speakers are mainly round. On the basis of the circular, **Soundking specially designed the square housing, which has a special aesthetic and personal shape.**

Accessories:

HC4"/5" speaker
Ceiling/hanging installation



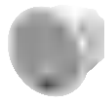

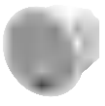

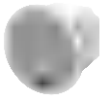

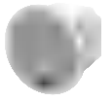

HC 6"/8"/10" speaker
With telescopic spacer-bar

Min. length 300mm
Max. length 500mm
4-step adjustments
50mm for each step











◎ Specifications

HC series 4"/ 5" passive fixed resistance/voltage coaxial ceiling/hanging speaker (aluminum)

Image	 	 	 	 
Model	HC4 HC4F	HC4T HC4FT	HC5 HC5F	HC5T HC5FT
Type	4" 2-way coaxial passive	4" 2-way coaxial passive	5" 2-way coaxial passive	5" 2-way coaxial passive
Sensitivity(1m@1w)	85Hz~20kHz	85Hz~20kHz	90Hz~20kHz	90Hz~20kHz
Power(AES)	85dB	85dB	90dB	90dB
Power(AES)	100W	100W	120W	120W
Max. SPL	Peak 111dB	Peak 111dB	Peak 117dB	Peak 117dB
Nom. Impedance	8Ω	/	8Ω	/
Power supply	/	70V/100V	/	70V/100V
Coverage (HxV)	100°x100°	100°x100°	80°x80°	80°x80°
Crossover	2.0kHz	2.0kHz	2.0kHz	2.0kHz
LF transducer	4" LF 33mmVC/100W	4" LF 33mmVC/100W	5" LF 35mmVC/100W	5" LF 35mmVC/100W
HF transducer	36mm VC/Nd magnet/5W	36mm VC/Nd magnet/25W	34mm VC/Nd magnet/20W	34mm VC/Nd magnet/20W
Input connector	4x terminal clamps	4x terminal clamps	4x terminal clamps	4x terminal clamps
Dimension(mm)	Φ200x145 187x187x145	Φ200x145 187x187x145	Φ295x199 240x240x199	Φ295x199 240x240x199
Net weight (kg)	3	3.5	4.5	4.5
Quantity(pcs)	2	2	2	2
Package size	270x540x220 250x440x220	360x360x330 315x315x330		
Gross weight	7	7.5		

◎ Specifications

HC series 6"/8" passive fixed resistance/voltage coaxial ceiling/hanging speaker (plastic)

Image	 	 	 	 
Model	HC6 HC6F	HC6T HC6FT	HC8 HC8F	HC8T HC8FT
Type	6.5" 2-way coaxial passive	6.5" 2-way coaxial passive	8" 2-way coaxial passive	8" 2-way coaxial passive
Frequency response (-10dB)	75Hz~20kHz	75Hz~20kHz	68Hz~20kHz	70Hz~20kHz
Sensitivity(1m@1w)	92dB	92dB	94dB	94dB
Power(AES)	150W	150W	250W	250W
Max. SPL	Peak 120 dB	Peak 120 dB	Peak 124 dB	Peak 124 dB
Nom. Impedance	8Ω	/	8Ω	/
Power supply	/	70V/100V	/	70V/100V
Coverage (HxV)	90°x90°	90°x90°	90°x90°	90°x90°
Crossover	2.2kHz	2.2kHz	2.2kHz	2.2kHz
LF transducer	6.5" LF/52mm VC/Nd/150W	6.5" LF/52mm VC/Nd/150W	8" LF/65mm VC/Nd/250W	8" LF/65mm VC/Nd/250W
HF transducer	25mm VC/Nd magnet/15W	25mm VC/Nd magnet/15W	37mm VC/Nd magnet/30W	37mm VC/Nd magnet/30W
Input connector	4x terminal clamps	4x terminal clamps	4x terminal clamps	4x terminal clamps
Dimension(mm)	Φ290x257 244x244x257	Φ290x257 244x244x257	Φ343x262 282x282x262	Φ343x262 282x282x262
Net weight (kg)	4.5	5.5	6.5	7.5
Quantity(pcs)	1	1	1	1
Package size	360x360x330 315x315x330	360x360x330 315x315x330	415x415x340 355x355x340	415x415x340 355x355x340
Gross weight	5.5	6.5	7.5	8.5

⊙ Specifications

HC series 10" passive fixed resistance/voltage coaxial ceiling/hanging speaker (wooden)

Image				
Model	HC10	HC10F	HC10T	HC10FT
Type	10" 2-way coaxial passive		10" 2-way coaxial passive	
Frequency response (-10dB)	65Hz~20kHz		65Hz~20kHz	
Sensitivity(1m@1w)	95dB		95dB	
Power(AES)	250W		250W	
Max. SPL	Peak 125 dB		Peak 125 dB	
Nom. Impedance	8Ω		/	
Power supply	/		70V/100V	
Coverage (HxV)	90°x90°		90°x90°	
Crossover	2.0kHz		2.0kHz	
LF transducer	10" LF/65mm VC/Nd/250W		10" LF/65mm VC/Nd/250W	
HF transducer	37mm VC/Nd magnet/30W		37mm VC/Nd magnet/30W	
Input connector	4x terminal clamps		4x terminal clamps	
Dimension(mm)	Φ375x290	320×320×290	Φ375x290	320×320×290
Net weight (kg)	11		12	
Quantity(pcs)	1		1	
Package size	450x450x360	410x410x360	450x450x360	410x410x360
Gross weight	12.5		13.5	

PH Series Multi-directivity Passive Speaker for Conference

Fixed resistance/ Fixed voltage coaxial

Product Introduction

PH06 and PH06T are multi-purpose passive coaxial ceiling speakers with completely independent innovative design and has been applied for patent. Including PH06(constant resistance), PH06T(constant voltage) two speakers, the sound is clear, bright, thick and full. It can be installed on the top of the leak, or can be installed on the top of the semi-hidden. It can be perfectly used in various indoor sound reinforcement occasions. **Especially in conference rooms, because of its unique multi-directional, accurate sound image positioning and uniform sound field coverage, it can effectively avoid microphone screaming and achieve perfect sound amplification.**



PH06



Installation note
Mounting height: about 3m
Coverage: 100°*70° (WxL)

1x6.5"/φ38mm VC
/Nd/120W/8Ω
5x1"/φ25mm VC
/Nd/10W/2Ω



Internal structure diagram

© Specifications

Model	PH06	PH06T
Frequency response(-10dB)	60Hz~20kHz	60Hz~20kHz
Sensitivity(1m@1w)	89dB	89dB
Power(AES)	120W	120W
Max. SPL	Peak 116 dB	Peak 116 dB
Nom. Impedance	8Ω	/
Power supply	/	70V/100V
Coverage (HxV)	100°x70°	100°x70°
Crossover	1.8kHz	1.8kHz
LF transducer	1x6.5"/φ38mm VC/Nd/120W/8Ω	1x6.5"/φ38mm VC/Nd/120W/8Ω
HF transducer	5x1"/φ25mm VC/Nd/10W/2Ω	5x1"/φ25mm VC/Nd/10W/2Ω
Input connector	4x terminal clamps	4x terminal clamps
Dimension(mm)	330x391x220	330x391x220
Net weight (kg)	5	5.9
Quantity(pcs)	1	1
Package size	475x415x300	475x415x300
Gross weight	7	7.9

FCL Series Passive Fixed Resistance Coaxial Speaker (aluminum/wooden)

Product Introduction

- ⊙ FCL04L is a passive coaxial speaker, made of aluminum alloy, which designed completely independent. Coaxial drive technology to realize natural sound and improve the clarity.
- ⊙ FCL04L is a fixed impedance, which facilitates project allocation and debugging.
- ⊙ Four installation methods for easy mount: wall-mount, hanging, in-ceiling, support
- ⊙ High-power, high-sensitivity, powerful and clear sound, accurate sound image positioning for nature 3D sound.



⊙ Specifications

Model	FCL04L	FCL04LS	FCL05L	FCL05LS
Frequency response(-10dB)	100Hz~20kHz	100Hz~20kHz	90Hz~20kHz	90Hz~20kHz
Sensitivity(1m@1w)	87dB	87dB	90dB	90dB
Nom. Impedance	8Ω	8Ω	8Ω	8Ω
Power(AES)	100W	100W	120W	120W
Crossover	2.0kHz	2.0kHz	2.0kHz	2.0kHz
Coverage (HxV)	80°x80°	80°x80°	80°x80°	80°x80°
Max. SPL	Peak 113 dB	Peak 113 dB	Peak 117 dB	Peak 117 dB
Transducer	4"x1+1.3"x 1	4"x1+1.3"x 1	5"x1+1.3"x 1	5"x1+1.3"x 1
Connector	2xNL4MP/1xPHOENIX	4-Pin Connector	2xNL4MP/1xPHOENIX	4-Pin Connector
Dimension(mm)	145x156x143	180x180x148	209x238x199	243x243x205
Net weight (kg)	2.5	1.9	/	/
Quantity(pcs)	1	1	1	1
Package size	/	/	/	/
Gross weight	/	/	/	/

FCL Series Passive Coaxial Speaker

Product Introduction

- ◉ The woofer adopts ultra-long magnetic circuit design technology, and the inner and outer layers are designed with double-wound voice coils to ensure that the unit continues to work stably and reliably with large dynamics;
- ◉ The tweeter uses PEEK composite sound film, aluminum flat-wire voice coil, which has clear and bright sound quality and stable performance.
- ◉ The coaxial drive technology can avoid the acoustic interference caused by non-coaxial structure, effectively improve the sound clarity, more uniform sound field coverage, powerful, clear, elastic hearing, and accurate sound image positioning;
- ◉ Made of high quality imported splints, slotted stitching, good rigidity and pure sound.
- ◉ High hardness steel grill, with special sound-transmitting cotton inside, to provide effective protection for speakers;
- ◉ Equipped with high-quality angle adjustment bracket, the angle can be adjusted horizontally and vertically.



FCL04H



FCL05H



FCL06H



FCL08H

© Specifications

Supports customized colors

Model	FCL04H	FCL05H	FCL06H	FCL08H
Bracket model	/	SB605	SB605	SB606
Type	2-way passive coaxial	2-way passive coaxial	2-way passive coaxial	2-way passive coaxial
Frequency response	100Hz~20kHz	100Hz~20kHz	80Hz~20kHz	70Hz~20kHz
Sensitivity(1m@1w)	87dB	89dB	90dB	93dB
Nom. Impedance	8Ω	8Ω	8Ω	8Ω
Power(AES)	100W	120W	150W	200W
Crossover	2.0kHz	2.7kHz	2.0kHz	2.0kHz
Coverage (HxV)	80°x80°	80°x80°	80°x80°	80°x80°
Max. SPL	Peak 113 dB	Peak 116 dB	Peak 118 dB	Peak 122 dB
Transducer	4"x1+1.3"x 1	5"x1+1.3"x 1	6.5"x1+1.3"x 1	8"x1+1.75"x 1
Connector	2xNL4MP/1xPHOENIX	2 terminal clamps	2 terminal clamps	2 terminal clamps
Dimension(mm)	150x157x139	160x278x261	192x335x290	245x410x339
Net weight (kg)	2.5	5	7	10.5
Quantity(pcs)	1	1	1	1
Package size(mm)	/	/	/	/
Gross weight(kg)	/	/	/	/

FCL Series Passive Coaxial Speaker

Product Introduction



Supports customized colors

© Specifications

Model	FCL10H	FCL12C	FCL12H
Bracket model	SB606	SB607	SB607
Type	2-way passive coaxial	2-way passive coaxial	2-way passive coaxial
Frequency response	60Hz~20kHz	55Hz~20kHz (-10dB)	55Hz~20kHz (-10dB)
Sensitivity(1m@1w)	96dB	97dB	98dB
Nom. Impedance	8Ω	8Ω	8Ω
Power(AES)	300W	400W	500W
Crossover	2.0kHz	1.5kHz	2.0kHz
Coverage (HxV)	80°x80°	80°x80°	80°x80°
Max. SPL	Peak 127 dB	Peak 129 dB	Peak 131 dB
Transducer	10"x1+1.75"x 1	12"x1+3"x 1	12"x1+3"x 1
Connector	2 terminal clamps	2 terminal clamps	2 terminal clamps
Dimension(mm)	295x513x397	355x583x450	355x583x450
Net weight (kg)	12	14	15
Quantity(pcs)	1	1	1
Package size(mm)	/	/	/
Gross weight(kg)	/	/	/

◎ Bracket for wall-mounted speaker

- ◎ The speaker wall mount is fixed by a separate locking connection for wall fixing of the speaker. Small and portable, there are multiple holes on the fixing plate.



Features:

- ◎ 3-step adjustment: 0°-10°-20°-30°
- ◎ Material: 3mm high strength steel plate
- ◎ Polarity adjustment for wall mounts via damping
- ◎ Housing: spray black

Model	SB605 (FCL06Hdedicated bracket)	SB606 (FCL08H/10Hdedicated bracket)	SB607 (FCL12Hdedicated bracket)
Image			
Size	55x115x105mm	90x160x108mm	120x220x108mm
Mount size			
Panel size			
Load	15kg	20kg	30kg
Net weight	0.65kg	1.05kg	1.35kg
Inner box	65x125x125mm	170x100x125mm	230x130x125mm
Master carton	345x395x280mm (30pcs)	360x320x280mm (18pcs)	480x410x280mm (12pcs)